



Solvent printing image

### Directions for file preparation

File preparation for printing

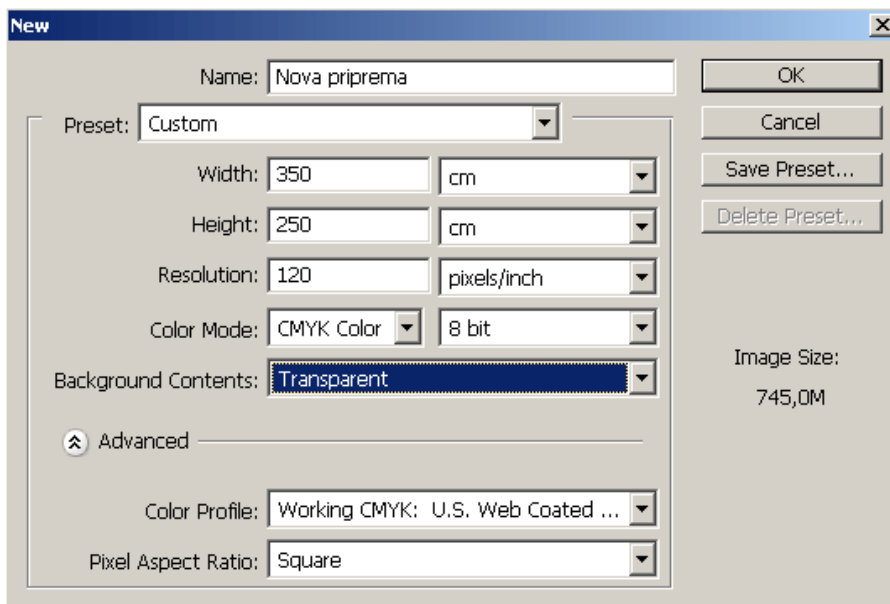
Files can be prepared as:

Photoshop EPS ili TIFF (if it is bitmapped graphics)

File dimension is in the ratio of 1:1

Color mode: CMYK or RGB

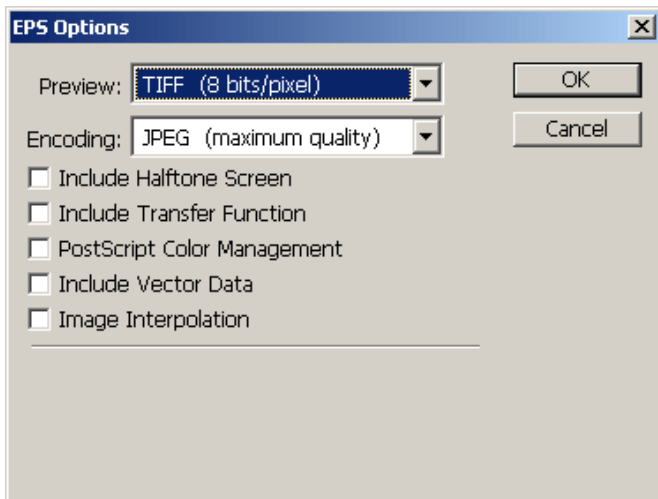
Preparation of files is done in the resolution of 80-120 DPI



If file dimension exceeds 5x5m, do a 10x decreased picture.

From the options choose: TIFF 8 bits/pixel

JPEG maximum quality



If the preparation is done in vector graphics, it is necessary to prepare files in the Adobe Illustrator (AI, EPS), or Corel Draw (CDR)  
Avoid using PANTONE colours.